



A newsletter of the Cuttyhunk Historical Society and Museum of the Elizabeth Islands

~
P.O. Box 181, Cuttyhunk, Massachusetts 02713

A Season of Connection

Robyn Weisel, CHS Executive Director

This past summer felt like things were beginning to get back to our typical season again on the Islands- more visitors, more events and programming, and more families coming back together. Besides the streets looking like they were part of a cowboy western, CHS saw lots of action on and around Cuttyhunk.

We had hundreds of participants in our Annual Opening Party and Auction event, the Model Boat Regatta, and activities on the lawn and under our new pop-up tent. Volunteers of every age and skill gave their time and talent to CHS and made it an engaging place to be. People stopped by the Akin Room to do research, help with library inventory, provide family tree news, and update info about their houses.

Other helpers greeted visitors, set up activities on the lawn, and made some much-needed building and garden improvements. Besides our successful Annual Appeals and Membership drives, CHS and the Museum rely on support from the community to make things run - we truly are a *volunteer-driven organization*.

Each year we recognize one outstanding volunteer that truly goes beyond the usual expectations to help CHS. This year we acknowledge Maddy Goggin for her artistic talents that she has so generously contributed to our Annual Auction, as well as to our exhibits.

We are pleased, too, to welcome new additions to our staff, committees and board. Anna Nagtegaal has come aboard to lend her tech and organizational skills. Lolly Schenck and Greg Weisel joined the Buildings & Grounds committee.

Rachel Garfield has returned to the board, and Tammis Groft and Kevin Mach are joining the collections and exhibit team. We encourage anyone interested in giving their time or talents to participate in small or more committed ways to help us achieve our mission for CHS and the community.



Part of making CHS and the Museum more accessible and relevant, as we navigate into more virtual platforms, is making what we do available and interactive for a greater audience. What we *did* learn over the last couple of years is that reaching out in more inclusive ways means reevaluating what our website can do to connect with more people, creating our Quarterboard and Appeals through emails and mobile platforms, and sharing collections/ archives and events.

Not only do electronic and virtual formats allow us to streamline our content and conserve financial and environmental resources, but they broaden our community so that people can better and more efficiently access information and content. We know this will be a transition for many, and we will always have paper editions for those who prefer them, but we think that ultimately using electronic formats is the future of our publications and outreach and will help us move toward being a more equitable organization.



CHS Model Boat Regatta volunteers and cheerleaders! (left to right) Molly Powers Tora, Rebecca Hornbach, Bev Prevost, Carolyn Powers, Bee Elmore, and Sandy Parker



Cape Cod Deaf Sailors visited four consecutive Thursday's in July. The captains and crew were all Deaf/Hard-of-Hearing and came from all around the country. The Museum stayed open for their evening, interpreted visits. [Cape Cod Deaf Sailing link](#)



Pictured Above, the Captains and First Mates of the Cape Cod Deaf Sailing group on their last visit -- a catered Shellfish Farms Lobster dinner!

Left: CHS Model Boat Regatta Winner, Manoa Tora (far right), with mom Molly Powers Tora and brother Samuela.



CHS President's Letter

Dear Elizabeth Islands Community,

In spite of an extreme drought and the massive water system project on Cuttyhunk, this summer brought many rewarding and memorable moments at the Museum of the Elizabeth Islands. Enjoy revisiting some in the pages of this first electronic issue of the *Quarterboard*, started back in 1994 and edited over the years by Ethel "Smoke" Twichell and Louise "Weezie" Garfield. We are grateful for their dedicated service as we begin a new and less costly approach to staying in touch with our community. Thanks to

Robyn, our Executive Director, for shepherding this transition, part of our Strategic Plan.

And speaking of the Strategic Plan, the board has just completed a second review of progress made in the six priorities approved in November 2021. Those priorities are:

- ~ **Expand organizational capacity**
- ~ **Secure collections management process**
- ~ **Maintain baseline level of program and communication activities**
- ~ **Secure our facilities**
- ~ **Transition from an operating board to a governing board**
- ~ **Raise funds that allow for expansion of operating expenses and facility needs**

Thank You!!

We would like to acknowledge and thank our outgoing board members:

**Bee Elmore
Amy Estabrook
Shelly Merriam
Marnie Weir**

Their strong commitment and hard work moved our organization forward in its mission.

We have completed action steps in some of these areas and learned important lessons along the way. As the water system project made clear, initiatives on islands take more planning, more time, more resources, and more patience. Thanks to Anna Nagtegaal, newly hired museum assistant, our Constant Contact constituency has expanded to over 600 addresses, extending our visibility beyond the summer months. We are seeking support to redesign our website to improve accessibility and outreach as well. An exhibit team chaired by Tammi Groft is planning a new exhibit for the Bosworth Room that will feature our varied art collection.

I have the unusual circumstance of being the first employee of CHS in 1991 and now president of its governing board. Both tasks are challenging, yet there is joy in working with folks whose love for the Elizabeth Islands inspires creative approaches, oils the sticking points, and encourages persistent effort. Are there stories you wish to see in these pages, in our exhibits, or on a new website? We will be reaching out to learn about them, both in person and virtually. We look forward to these conversations.

With warmest regards,
Carolyn Powers
President

Volunteers of Every Kind and Skill- We love you!

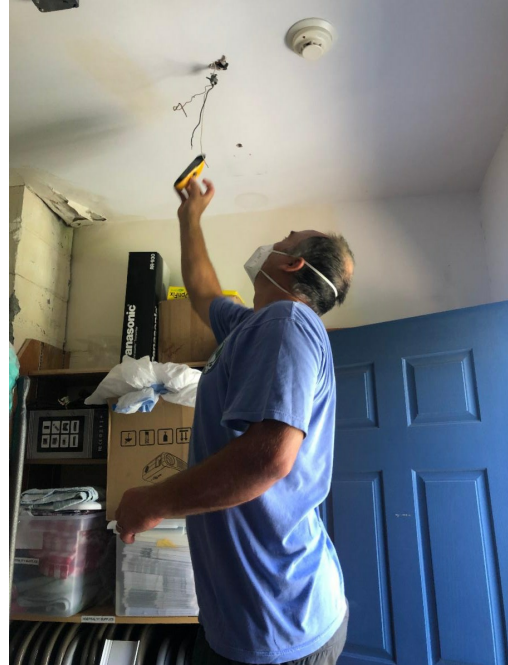


Volunteer of the Year Maddy Goggin!

CHS is fortunate to have so many terrific volunteers that share their talents, time and resources. Maddy has been helping out at the Museum since she was a kid when she gave half her lemonade stand proceeds to CHS. Now, she shares her artistic talents by designing one-of-a kind art pieces for the Annual Auction and capturing island houses and icons for our exhibits. We thank Maddy for her beautiful contributions, her energetic spirit, and her willingness to jump into any project!



Sam Heintz took time off from his many other island jobs to take his family and friends through the Museum!



The Michaluk Family helped paint doors, put up new lights and repair porch problems.



Volunteering is Your Unique Way of Sharing

At CHS there are so many ways to help- from greeting visitors to gardening to helping inventory collections. We appreciate your skills and abilities and understand how valuable your time is. Just an hour or two can help CHS accomplish many to-do's. Please get in contact and let us know what you can do to help out!

Pop-Up Workshops and Akin Room Research

The Akin Room will be our dedicated, interactive space where visitors, educators, researchers and volunteers can dive into projects like their **Family Trees**, update their house information in the **House Project** and capture a story in our **Community Connection** area (coming soon!)





Above: Collection archives being captured by Henry Weisel (volunteer). Our new Pop-Up tent this summer was a hit with a sea glass study and fishing lure art/history workshops. (Far Right)



Merino Mania 'Merino Ram' From H. S. Randall's *The Practical Shepherd* (1863)

From Sheep to Shore

by Allie Thurston

A recent acquisition of an 1801 document is a record of a five year rental agreement for Nashawena between John Slocum and the daughters of Walter Buffum, likely an agreement for grazing sheep. Research into the historical connections between these three people offers insight into the activities of the Quaker communities of Newport, Dartmouth and the Elizabeth Islands. Common threads reveal links to them through church, marriages, slaves and wool.

Along with fellow Quakers seeking asylum from persecution, the Slocums settled in Portsmouth, RI in 1648. The community members were sheep farmers, successful merchants and savvy land speculators. These 'Newport men' purchased the western Elizabeth Islands and valued them as grazing lands for livestock and as a waypoint between their communities. Reverend Peleg Slocum owned Nashawena from 1693 until 1742 when it passed to his son Holder. Neither Peleg nor Holder appear to have lived there but visited from time to time.

Peleg transported sheep seasonally from his Dartmouth farm to Nashawena. In 1725, Quaker Peleg refused to pay the 'priest's rate' to the Town of Chilmark. Eighty of his sheep were seized from Nashawena as payment. His son Holder employed Cuff Slocum to tend the livestock on Cuttyhunk. Cuff's youngest son, Paul, was born there in 1759 and became a successful merchant and sea captain. The practice of leasing the islands for grazing was still evident in 1773 when a claim for three years of grazing 285 sheep was made on the estate of Holder's widow.

The lessor on the 1801 rental document appears to be John Slocum Jr. who lived and died on Nashawena. His father, John Sr. bought Cuff Slocum, originally purchased from the Newport slave market. John Jr. was the grandfather of Mary Slocum

Allen (Grandma Daggett).

The lessees, sisters Amy and Elizabeth Buffum, born in Newport, RI, were related to the Slocum, Easton, and Collins families. Their mother, a great great granddaughter of Peleg Slocum, was also a great granddaughter of Governor John Easton and daughter of Governor Samuel Collins. The sisters' father, Walter Buffum, was a Newport privateer and ship captain who was captured in the Mediterranean while on a slaving mission in 1758.

In 1810, at the start of The Great Sheep Craze, Paul Cuffe was responsible for importing the first merino sheep from Spain to Newport for livestock breeder Reverend David Buffum. Buffum was an associate of John Slocum, whose family had owned Paul's father.

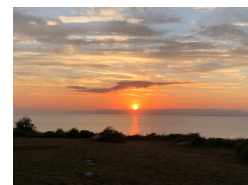


New Museum Assistant, *Anna Nagtegaal*

This past summer we hired a museum assistant, Anna Nagtegaal, to help with everything from greeting visitors to data entry to historical projects. She's been an amazing addition to the organization with her tech skills, savvy creativeness, and willingness to take on all kinds of CHS projects. Stop by and say "Hi!". Welcome aboard, Anna!

In memoriam...

Gerrit Sanford



COMING in SUMMER 2023

ISLAND AS MUSE

**ART from the CUTTYHUNK
HISTORICAL SOCIETY COLLECTION**

William Shakespeare may have been the first to embrace Cuttyhunk as muse. Shakespeare's patron, the Earl of

Southampton, funded Bartholomew Gosnold's 1602 exploration of Cuttyhunk; in the years following, Shakespeare, at the Earl's court, heard tales of this tempestuous and fog-shrouded island. The Tempest, Shakespeare's last play, followed shortly after. The legend that Cuttyhunk is the Tempest's setting persists to this day.

Two centuries later, in 1858, Albert Bierstadt took Cuttyhunk as his muse in the dreamlike painting "Gosnold at Cuttyhunk" (now in the New Bedford Whaling Museum's collection).

Since that time, countless artists have made Cuttyhunk and the Elizabeth Islands their muse, right up to the present day, as you'll discover in next year's exhibit of artworks from the Cuttyhunk Historical Society's collection.

"We are such stuff as dreams are made on"
The Tempest, Act IV



Barges Beach by Richard Ewen (1928-2009) top/above



**Gosnold at Cuttyhunk
by Albert Bierstadt (1830-1902)**



Job Opening!
CHS & Museum
Title: Curator
Type: Temporary, 12 weeks with housing

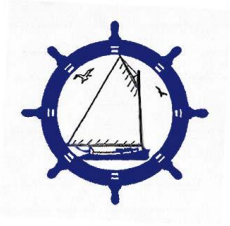
Cuttyhunk Historical Society (CHS) seeks a curator to address a back-log of electronic record-keeping by creating new and reviewing/updating current catalog records in PastPerfect.

Please contact us if you or someone you know is interested:
cuttyhunkhistoricalsociety@gmail.com

Wanderer Exhibit
We Need YOUR Help

We look further forward to 2024, the 100th anniversary of the Wanderer shipwreck. In order to make this an engaging and fascinating exhibit, we are soliciting the help of our community. We are looking for volunteers, researchers, historians, educators to help build an exciting show. We will be setting up a committee of interested volunteers soon. Please let us know if you're interested or have something to share/donate/tell us about!





**2022-2023
CHS Staff & Board**

Robyn Weisel
Executive Director

Anna Nagtegaal
Museum Assistant

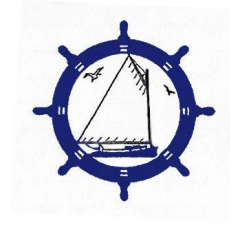
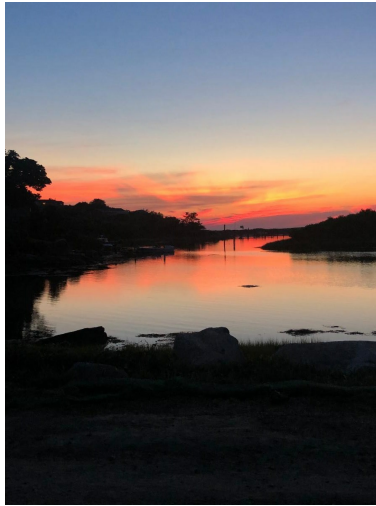
Carolyn Powers
President of the Board

George Shaw
Treasurer

Horace Garfield
Secretary

Rachel Garfield*
Nate Hornbach
Bert Nagtegaal
Laura Mali-Astrue
Kate Parker
Bob Smith
Lise Stone
Allie Thurston

** new member*



**Cuttyhunk Historical Society
& Museum of the Elizabeth
Islands**

~

**Serving the Elizabeth Islands
PO Box 181
23 Tower Hill Road
Cuttyhunk Island, MA 02713**

~

**The purpose of the Cuttyhunk
Historical Society is to record and
preserve the history, traditions,
and artifacts of Cuttyhunk Island
and the Elizabeth Islands of
Massachusetts, and to engage the
community and public through
education, exhibitions,
and outreach.**

~

**All CHS photos by or collected by
Robyn Weisel**

~

**Quarterboard is the newsletter
of the Cuttyhunk Historical
Society and is published
twice a year.**

**Visit our website for membership and to make a donation. Click
HERE!**



Try email marketing for free today!